



BUDGET TIMELINE

Brought to you by
BROKEN ARROW PUBLIC SCHOOLS

The timeline in which the state of Oklahoma adopts a budget and allocates money to education is complicated. Just as a salaried employee isn't paid annually in one lump sum, school districts aren't paid that way either. This timeline shows how and when school budgets are set and funded.



April 1

Deadline for Legislature to pass the state's education budget based on expected income

Generally the education budget is finalized when the state budget is adopted in late May.

May

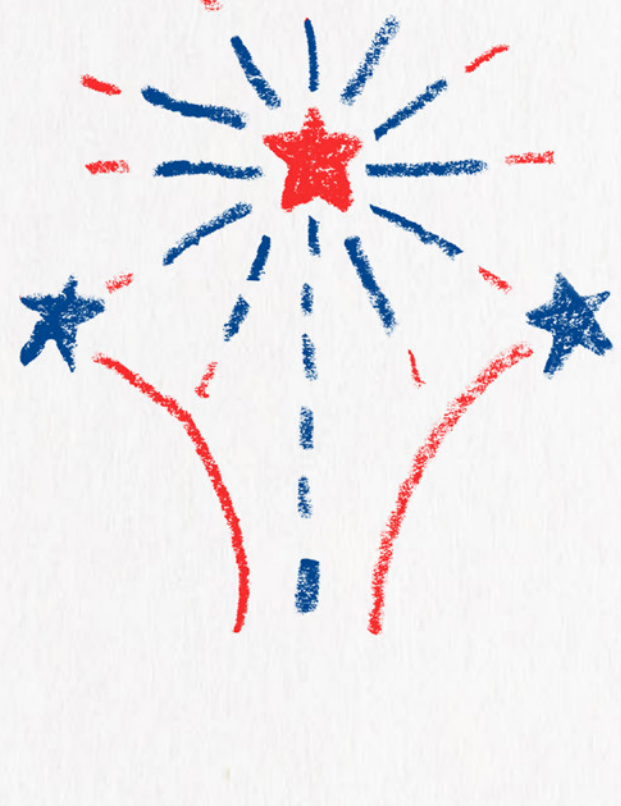
June

July

The district receives Allocation Notices from the State Department of Education (SDE) based on the state's funding formula.

Allocation Notices: These notices tell the district how much it can expect to receive from the state for multiple projects, including Federal Programs.

No actual money is received by the district at this time.



Aug

SDE sends the first monthly installment of the district's funding.

The district does not receive its entire allocation at once. It is paid in monthly installments as state revenue is collected.

Sept 30

The district's Estimate of Needs (EON) is approved.

EON: An itemized estimate of what the district will need to pay for and how much money it expects to receive.

The district has 60 days from the date of EON approval to set its budget.



Oct

Nov



Dec

State income is assessed by the Legislature to determine if a mid-year adjustment is needed.

Mid-Year Adjustment: Because the state's budget is determined based on the amount of money the state expects to receive, the legislature must look to see if expectations have been met. If the state's income is less than expected then an adjustment is needed, and the amount the district receives will be reduced.



Jan

The district receives the mid-term allocation and learns if there will be a decrease in its monthly installments.

If a mid-year adjustment is required due to state income short falls, the monthly installments the district receives are decreased accordingly.



Feb

If a reduction is required, the district receives the first of its decreased monthly installments.

March

April

May

June

The district receives its final installment from the SDE for the current fiscal year.

The district does not receive state funding in the month of July and must use remaining funds to cover expenses until state funding restarts in August.

